

# THE GEMINI water hydraulic lift



## Builder's Information

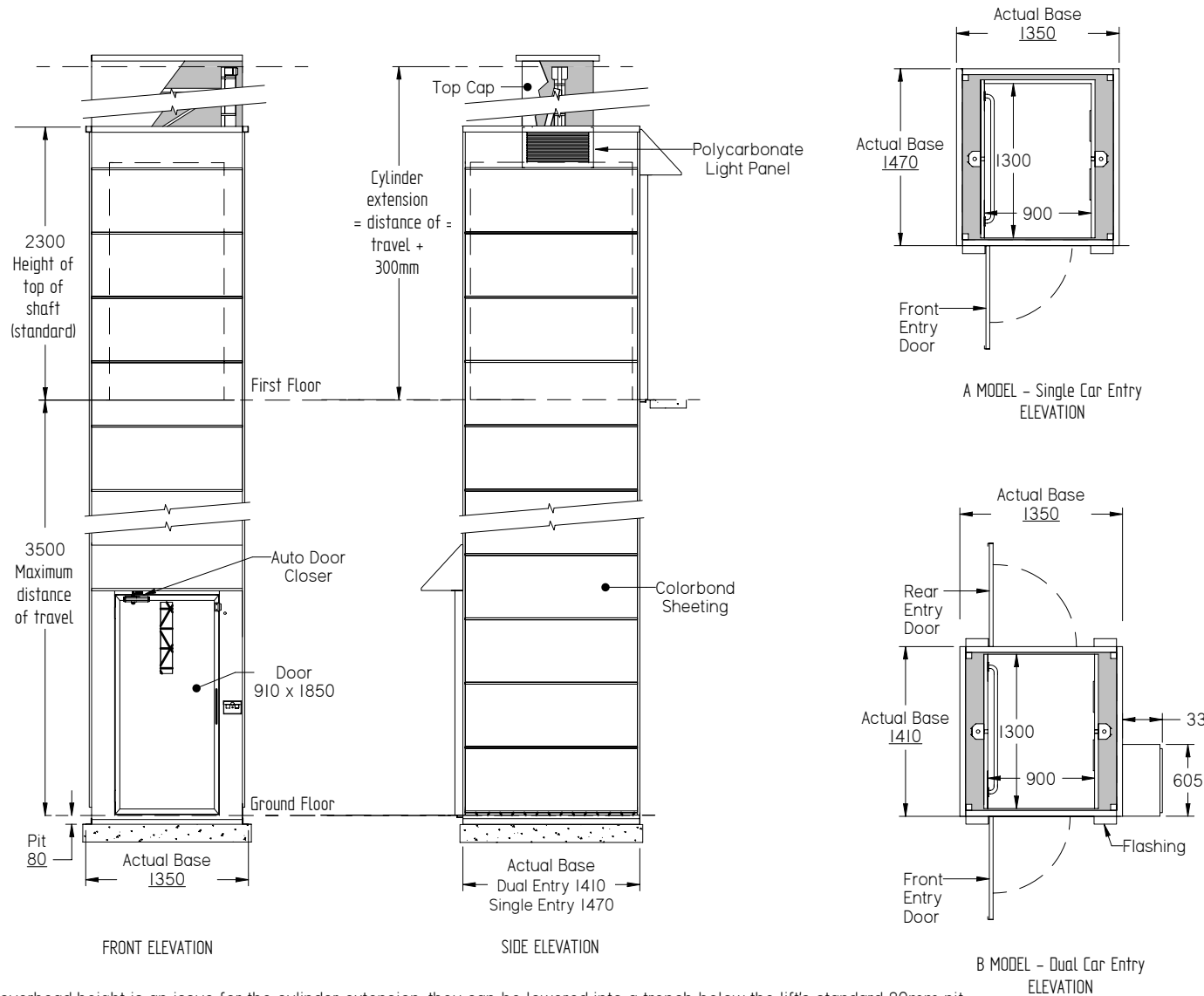
Supplied as a self supporting unit the lift requires no load bearing walls.

Available in a number of colorbond colours the external paneling of the Gemini comes in two heights - 550mm & 230mm

Power requirements: Single Phase 240V 16amp.

Phone: Extension of home phone line

For technical details or confirmed slab & penetration measurements please contact one of our qualified Lift Consultant



PLEASE NOTE: If overhead height is an issue for the cylinder extension, they can be lowered into a trench below the lift's standard 80mm pit. These are indicative drawings. Please speak to one of our friendly Lift Consultants for further information on lift requirements.

For confirmation of measurement please contact you local Gemini supplier as these dimension and specification are a guide only and must not be used for construction purposes

**DRW: 131025\_128**

DRAWN	Toni	26/09/13
CHECKED	Toni Gregory	

CATEGORY:	Water Hyd
LAST AUTHOR:	Production
LAST MODIFIED:	25/10/2013
LAST PRINTED:	8/11/2013

**GEMINI water hydraulic residential lift**  
Generic Drawing

SIZE: A3 SHEET 1 OF 1 Dimensions: mm (unless specified)

900 x 1300 x 2000 lift car  
Australian Standard 1735 part 17