

THE PIONEER 16 oil hydraulic lift



Builder's Information

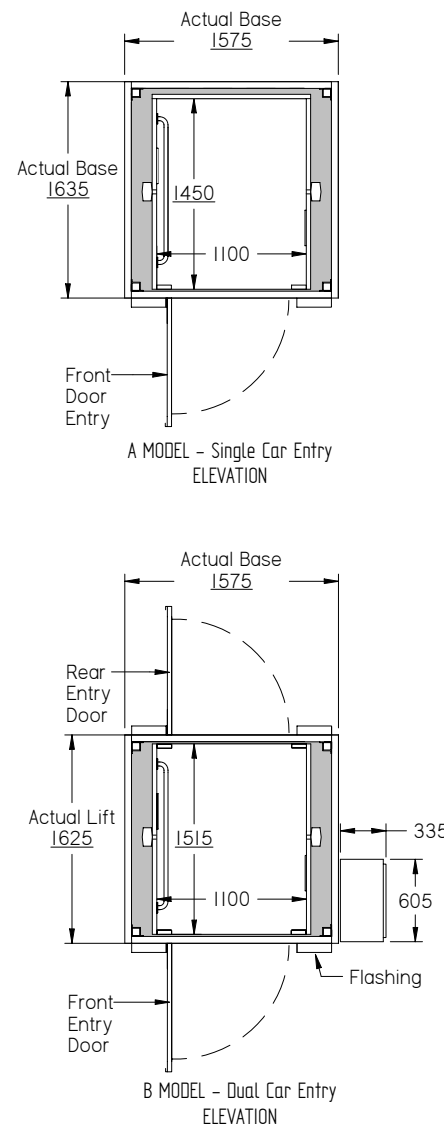
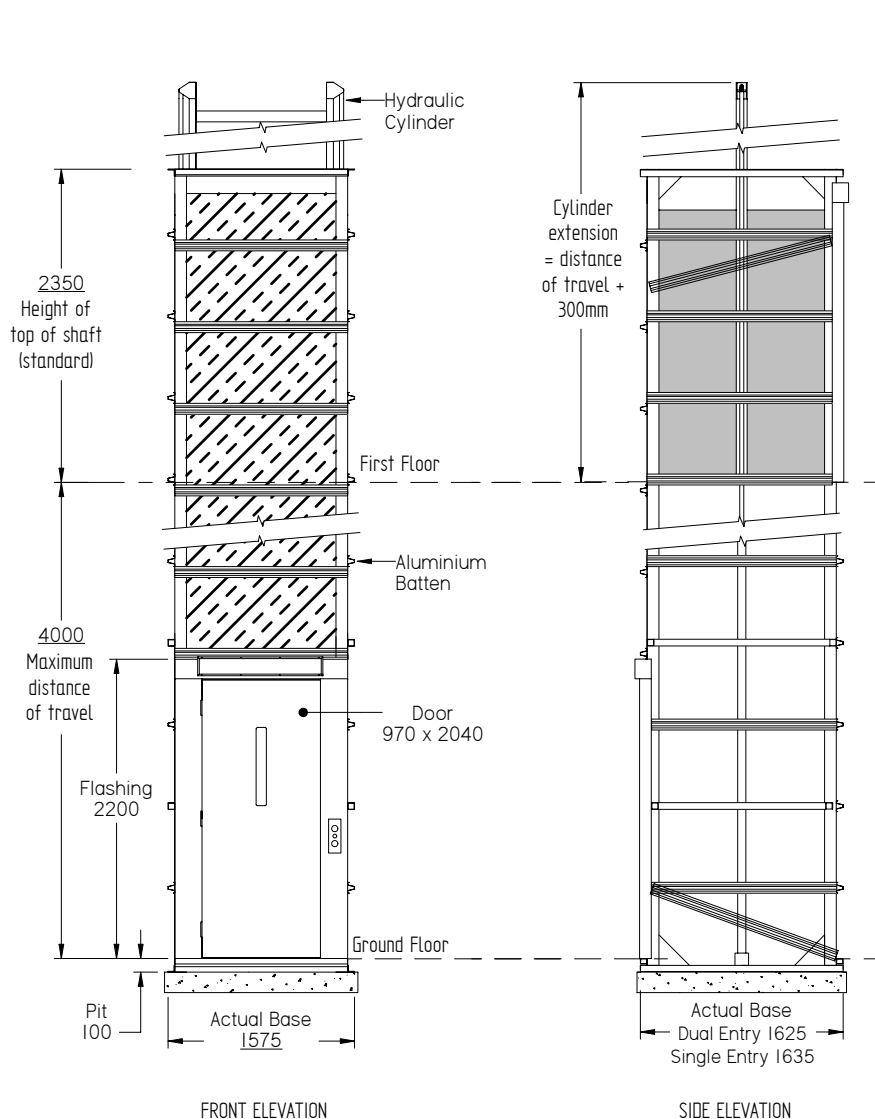
Supplied as a self supporting unit the lift requires no load bearing walls.

If selected, the aluminium battens on the lift can be set up to assist in cladding directly to the lifts tower.

Power requirements: Single Phase 240V 16amp.

Phone: extension of home phone line

For technical details or confirmed slab & penetration measurements please contact one of our qualified Lift Consultant



PLEASE NOTE: If overhead height is an issue for the cylinder extension, they can be lowered into a trench below the lift's standard 100mm pit. These are indicative drawings. Please speak to one of our friendly Lift Consultants for further information on lift requirements.

For confirmation of measurements please contact your local Pioneer 16 supplier. These dimensions and specifications are a guide only and must not be used for construction purposes.

DRW: 131025_279

CATEGORY: Oil Hyd

Pioneer 16 oil hydraulic commercial lift

Single Entry 1100mm x 1450mm x 2100mm
Dual Entry 1100mm x 1515mm x 2100mm
Australian Standard 1735 part 16

DRAWN	Production	08/10/13	LAST MODIFIED: 25/10/2013
CHECKED	Toni Gregory		LAST PRINTED: 8/11/2013

Generic Drawing of a BEA complaint lift

SIZE: A3 SHEET 1 OF 1 Dimensions: mm (unless specified)