

THE APOLLO water hydraulic lift



Builder's Information

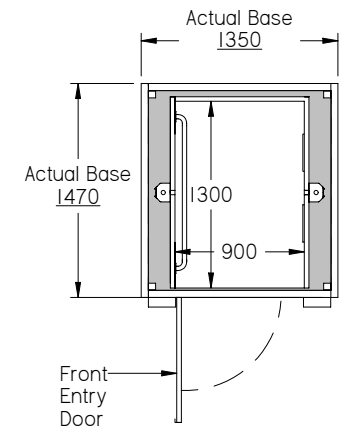
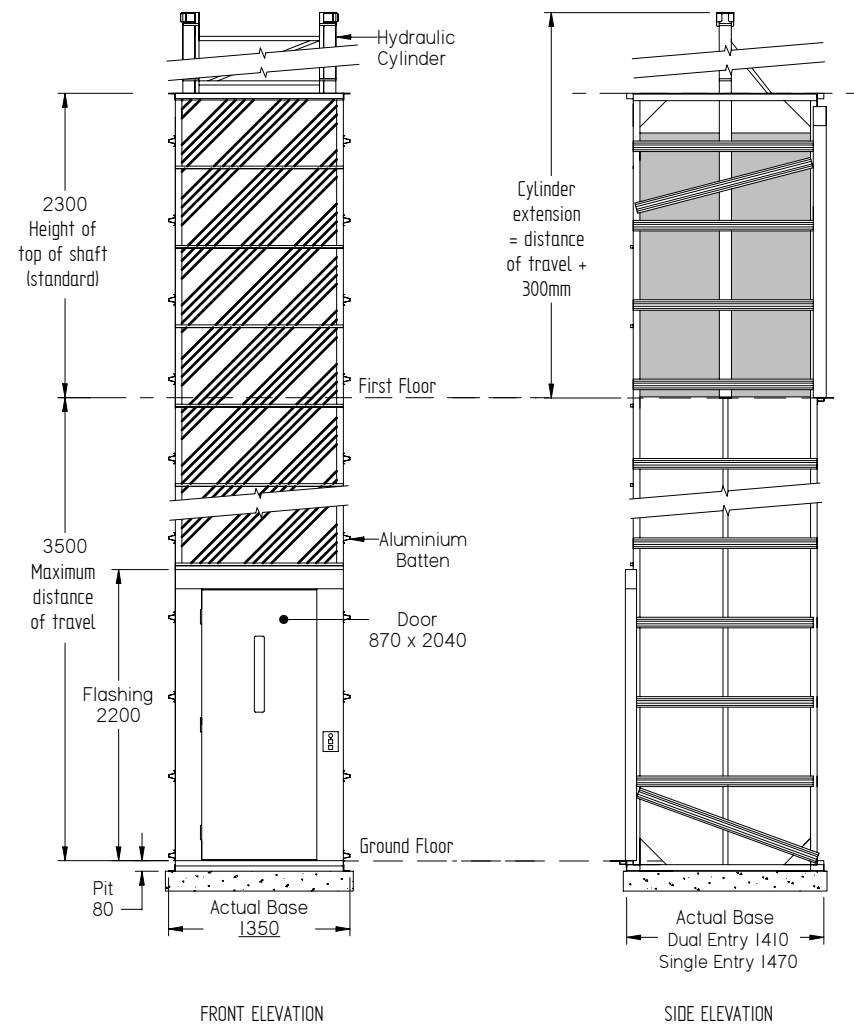
Supplied as a self supporting unit the lift requires no load bearing walls.

If selected, the aluminium battens on the lift can be set up to assist in cladding directly to the lifts tower.

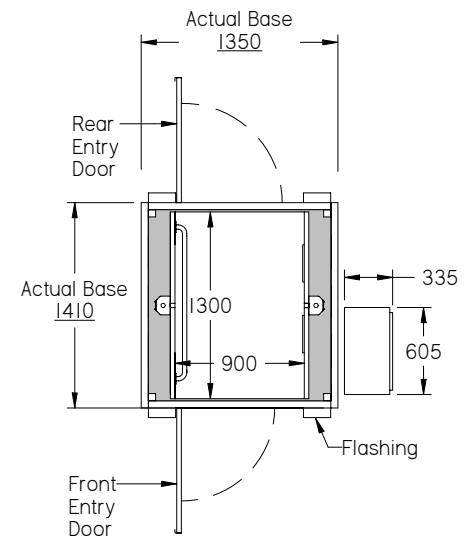
Power requirements: Single Phase 240V 16amp.

Phone: Extension of home phone line

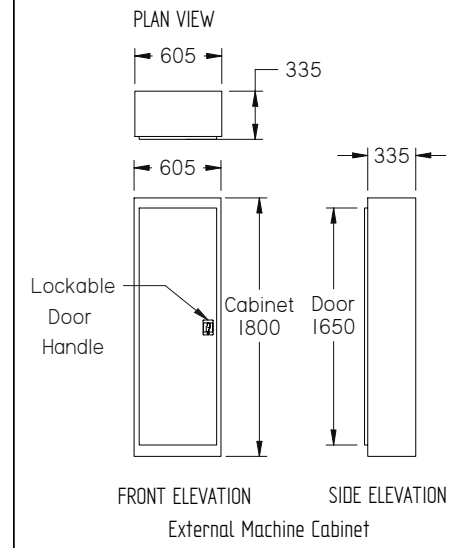
For technical details or confirmed slab & penetration measurements please contact one of our qualified Lift Consultant



A MODEL - Single Car Entry ELEVATION



B MODEL - Dual Car Entry ELEVATION



PLEASE NOTE: If overhead height is an issue for the cylinder extension, they can be lowered into a trench below the lift's standard 80mm pit. These are indicative drawings. Please speak to one of our friendly Lift Consultants for further information on lift requirements.

For confirmation of measurements, please contact your local Apollo supplier. These dimensions and specifications are a guide only and must not be used for construction purposes			DRW: 131025_209		CATEGORY: Water Hyd LAST AUTHOR: Production		APOLLO water hydraulic residential lift Generic Drawing		900 x 1300 x 2000 lift car Australian Standard 1735 part 17	
DRAWN	Production	26/09/13	LAST MODIFIED: 25/10/2013		SIZE: A3		SHEET 1 OF 1		Dimensions: mm (unless specified)	
CHECKED	Toni Gregory		LAST PRINTED: 8/11/2013							