

# THE ORION 16 oil hydraulic lift

## AUSSIE LIFTS

### Builder's Information

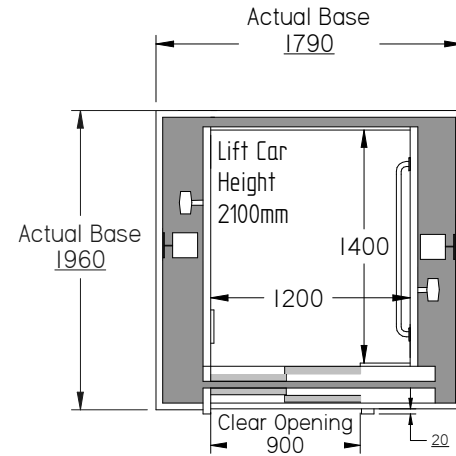
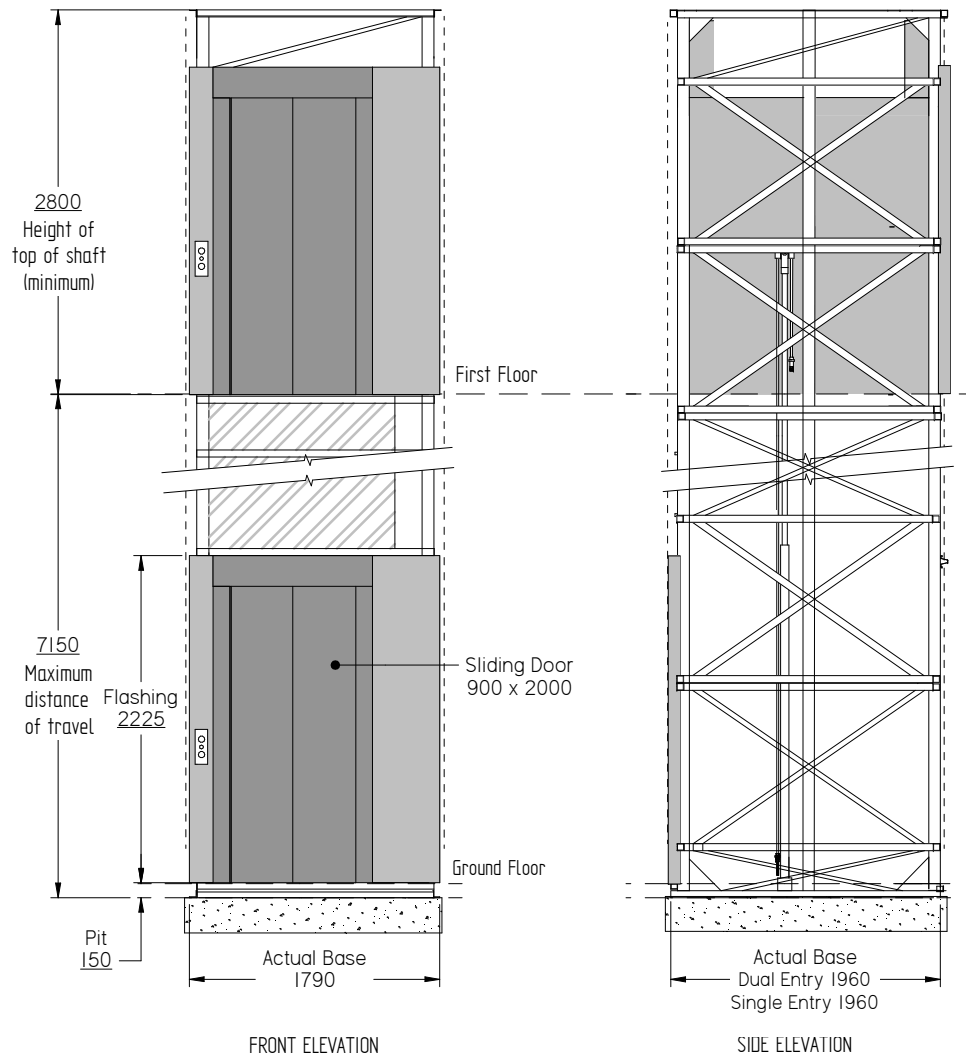
Supplied as a self supporting unit the lift requires no load bearing walls.

If selected, the aluminium battens on the lift can be set up to assist in cladding directly to the lifts tower.

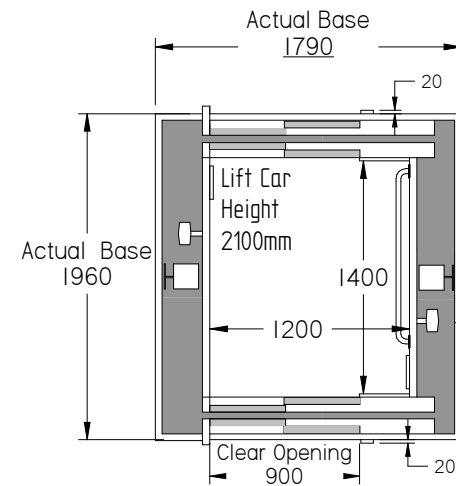
Power requirements: Single Phase 240V 32amp.

Phone: Extension provided by either an analogue line or a GSM Gateway

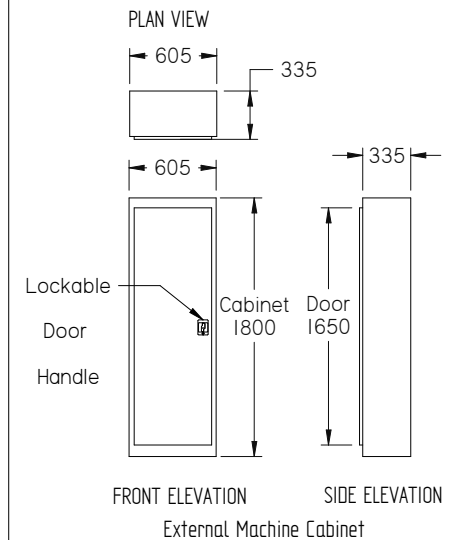
For technical details or confirmed slab & penetration measurements please contact one of our qualified Lift Consultant



A MODEL PLAN  
Single Entry Car



B MODEL PLAN  
Dual Entry Car



FRONT ELEVATION SIDE ELEVATION  
External Machine Cabinet

PLEASE NOTE: No overhead height is required with this lift as the hydraulic cylinders are contained within the lift shaft. These are indicative drawings. Please speak to one of our friendly Lift Consultants for further information on lift requirements.

For confirmation of measurements, please contact your local Orion 16 supplier. These dimensions and specifications are a guide only and must not be used for construction purposes.

DRAWN: serviceco		DATE: 08/02/16	
CHECKED: Toni Gregory		LAST MODIFIED: 11/10/2018	
LAST PRINTED: 11/10/2018		CATEGORY: Oil Hyd Chain	
LAST AUTHOR: Toni Gregory		LAST MODIFIED: 11/10/2018	

**ORION 16 oil hyd chain over commercial lift**  
Generic Drawing for BCA compliant lift

SIZE: A3 SHEET 1 OF 1 Dimensions: mm (unless specified)

Single entry 1200mm x 1400mm x 2100mm  
Dual entry 1200mm x 1400mm x 2100mm  
Australian Standard 1735 part 16